


UF UNIVERSITY OF FLORIDA

Beef Nutrition and Management Program Highlights

March 13, 2018



Philippe Moriel, PhD
Assistant Professor
Range Cattle Research & Education Center
University of Florida, Ona, FL

UF UNIVERSITY OF FLORIDA

BCS at calving vs. Pregnancy Rate, %




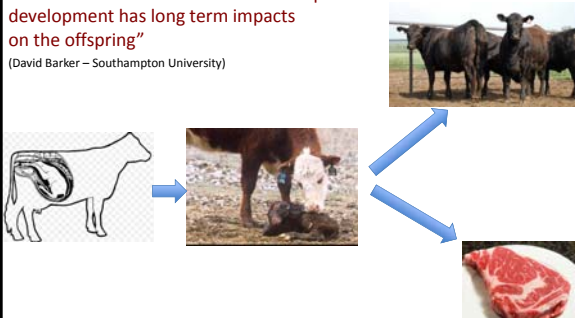
Photo Source: Dr. Matt Hersom and John Arthington


	Body condition score at calving		
	4	5	6
Spitzer et al. (1995)	56 ^a	80 ^b	96 ^c
Lake et al. (2005)	64 ^a	-	89 ^b
Lents et al (2008)	56 ^a	88 ^b	-
Bohnert et al (2013)	79 ^a	92 ^b	-
Average	63.8	86.7	92.5

^{a,b,c} P < 0.05 ➔

Fetal Programming?

“Maternal stimuli or insult at a critical period in fetal development has long term impacts on the offspring”
(David Barker – Southampton University)

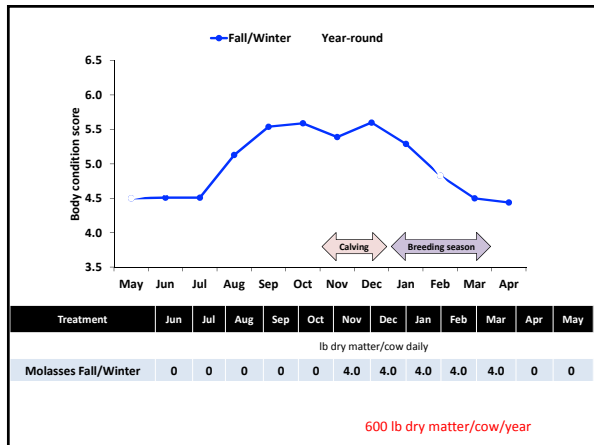


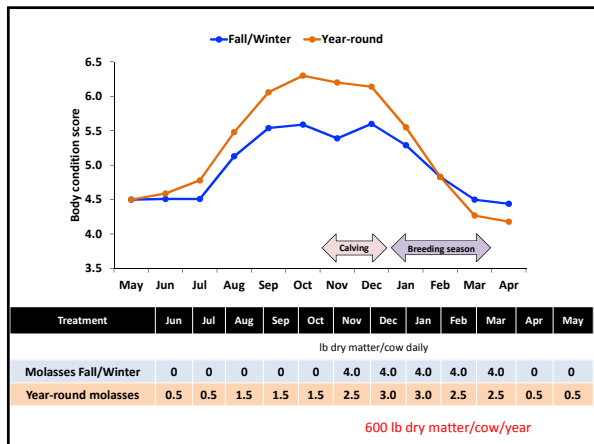


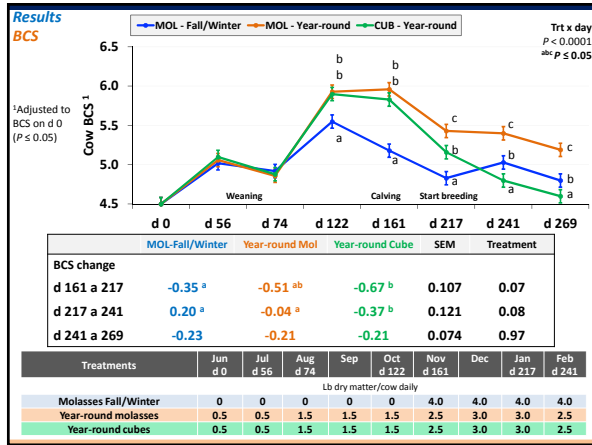
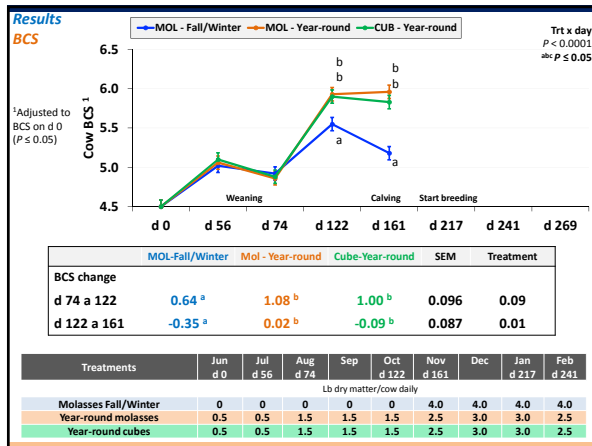
UF UNIVERSITY OF FLORIDA

*Beef Enhancement Funds
Florida Cattlemen's Association*

Study #1 – Effects of year-round supplementation of sugarcane molasses and range cubes on performance of beef cows and their offspring








Results – Calving and pre-weaning calf performance

abc P ≤ 0.05

Item	MOL-Fall/Wint	MOL-Year-round	CUB-Year-round	SEM	P
Calving, % of total cows	100	85	93	4.9	0.11
Calving date, day of the study	160	157	155	4.8	0.75
Calf birth weight, lb	78	75	80	3.2	0.67
Calf average daily gain, lb/day					
Birth to d 217	1.94	1.85	2.05	0.097	0.46
Birth to d 269	1.81	1.61	1.74	0.075	0.29

d 241 = start of breeding season

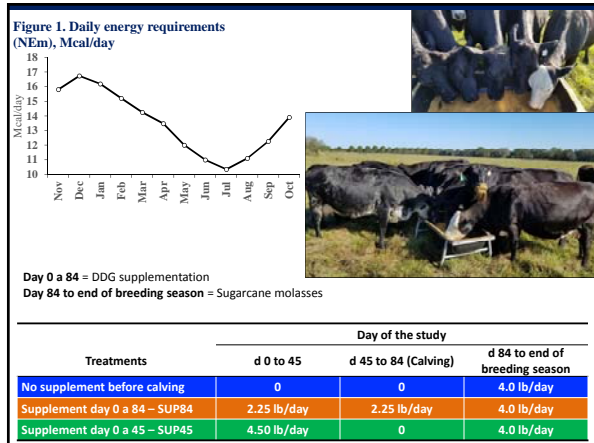
Treatments	Jun d 0	Jul d 56	Aug d 74	Sep	Oct d 122	Nov d 161	Dec	Jan d 217	Feb d 241
Lb dry matter/cow daily									
Molasses Fall/Winter	0	0	0	0	0	4.0	4.0	4.0	4.0
Year-round molasses	0.5	0.5	1.5	1.5	1.5	2.5	3.0	3.0	2.5
Year-round cubes	0.5	0.5	1.5	1.5	1.5	2.5	3.0	3.0	2.5

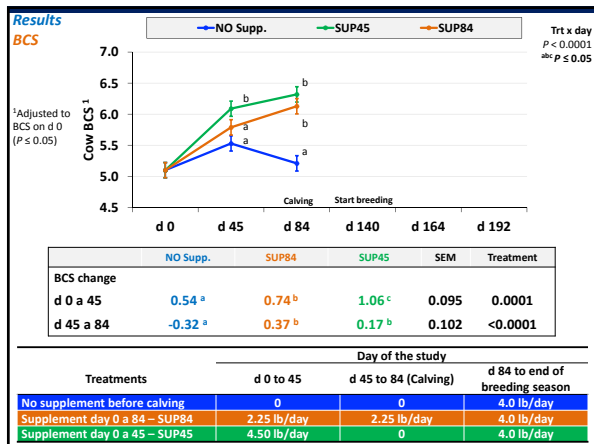


UF UNIVERSITY OF FLORIDA

Beef Enhancement Funds
Florida Cattlemen's Association

Study #2 – Effects of dried distillers grains (DDG) supplementation during late-gestation on performance of cows and their offspring





UF UNIVERSITY OF FLORIDA

Preliminary results

Average percentage of people selecting the correct BCS of 10 cows:

County	Before the training	After the training
Okeechobee - 37 attendees	49.0 %	60.0 %
Hendry - 25 attendees	53.7 %	64.4 %
Polk - 60 attendees	45.0 %	62.0 %
AVERAGE	49.2 %	62.1 %

UF UNIVERSITY OF FLORIDA

Overview of BCS Project

Part 1 = Importance of Body Condition Score (BCS)
 - Impact on fertility and profitability

Part 2 = BCS system
 - Test your knowledge
 - Tips for evaluating cow BCS
 - Re-evaluate your knowledge

Please visit for more details:
 Range Cattle REC, Ona FL rcrec-ona.ifas.ufl.edu
 South Florida Beef Program sfbfp.ifas.ufl.edu
 UF Electronic Data Information Source edis.ifas.ufl.edu

UF UNIVERSITY OF FLORIDA

Special thanks

Initial efforts:
Cow Calf Nutrition Working Group
 Dr. John Arthington
 Lindsey Wiggins
 Bridget Stice
 Ed Jennings

Technical assistance:
 Andrea Dunlap