

UF/IFAS

Range Cattle Research & Education Center NEWS

3401 Experiment Station • Ona, FL 33865
863.735.1314 • rrec-ona.ifas.ufl.edu

July 2013 – Vol. 1 No. 3

6th Annual Youth Field Day

by Andrea Dunalp

Each June we host a field day specifically structured for students ages 8 – 18 with the goal of exciting them about agriculture and science, revealing future opportunities in those fields, and fostering a love of learning in these students which will promote agriculture and good stewardship. At this, our 6th Youth Field Day, 161 participants enjoyed a new structure which was more like an expo than our past field days. Held on June 28, students and adults had the pleasure of visiting 33 interactive, educational booths, informative presentations, and a pasture tour.



Soil Quality: Measuring Soil Microbial Activity
Dr. Maria Silveira

Upside Down & All Around: Opportunities in the Horse Industry
Ashley Fluke

This year's expo participants:

Abraham Baldwin Agricultural College
Block and Bridle at UF
CF Industries
DeSoto/ Charlotte Farm Bureau's Young Farmers and Ranchers
Farm to School
Fields Equipment Co. Inc.
Florida Automated Weather Network (FAWN)
Florida Beef Council
Florida Cattlemen's Association
Florida Cattlewomen's Association



SPECIAL THANKS TO OUR FACULTY, STAFF AND STUDENTS, THE SOUTH FLORIDA BEEF FORAGE PROGRAM, AND -

This year's presenters:

The Ona White Angus Project
Dr. John Arthington & Dr. Phillip Lancaster

Ultrasound Demonstration
Amy Perryman

Forage Research
Dr. Joao Vendramini

Steer Halter Breaking Demonstration
Matt Warren

Why Control Weeds?
Dr. Brent Sellers & Dr. Sarah Lancaster



IN THIS ISSUE

Student Spotlight 2

Upcoming Events 3

Recent Publications 4

Faculty News 4

"6th Annual Youth Field Day" continued from previous page

Florida Department of Agriculture and Consumer Services, Best Management Practices for Water Quality
 Florida Fence Post
 Florida Forest Service
 Florida Friendly Landscape
 Gator Feed Co. Inc
 Injections & Reading Labels – Christa Kirby
 Junior Florida Cattlemen's Association
 Lakeland Animal Nutrition
 Meats – Sonja Crawford
 Mosaic
 Polk State College
 Opportunities in the Horse Industry – Ashley Fluke
 Range Cattle REC Agronomy
 Range Cattle REC Animal Sciences
 Range Cattle REC Soil & Water Sciences
 Range Cattle REC Weed Science
 Society for Mining, Metallurgy & Exploration
 South Florida Beef Forage Program
 South Florida Water Management District
 Ultrasound – Amy Perryman
 University of Florida Animal Science Department
 University of Florida/ IFAS Hardee County Extension
 Warner University

Visit this link to see all the pictures:
<http://rcrec-ona.ifas.ufl.edu/>



All of our Sponsors!

Adams Ranch
 Bar Crescent S Ranch
 CF Industries
 Doyle Carlton III
 Farm Credit of Florida
 Fields Equipment Company
 Florida Department of Agriculture and Consumer Services
 Florida Fence Post
 Glade and Grove Supply
 Heartland Growers Supply
 Highlands County Farm Bureau
 McArthur Farms
 Mosaic
 Sarasota County Farm Bureau
 Seminole Tribe of Florida
 Wauchula State Bank

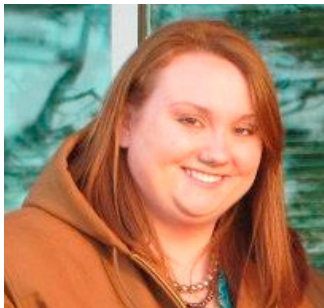


Student Spotlight



Kelsea Guest is an upcoming senior at Braden River High School in Bradenton, Florida. This July she has been working at the Center getting hands on experience and learning about the research being done here. She hopes to one day attend the University of Florida and pursue a degree in veterinary medicine. Kelsea had this to say about this year's youth field day - "My favorite part was the sonogram demonstration. I thought that this demonstration was very educational and interesting"





Bayleigh Pierstorff graduated from Hardee Senior High School in 2010 and began her studies at Abraham Baldwin Agricultural College (ABAC) in Tifton, Georgia. There she is pursuing a degree in Diversified Agriculture specializing in livestock production and plans to graduate in May 2014. This summer she has enjoyed serving as an extension intern at our Center. Here she played a major role in the preparations for

the youth field day serving as the coordinator for the expo portion of the field day, working with 33 booth participants. Bayleigh also worked directly with the 15 of our field day sponsors. Additionally she has been responsible for the website updating of the South Florida Beef Forage Program's Purebred Breeders list and worked on the preservation of historic pictures and documents. And finally, Bayleigh has enjoyed assisting with forage sampling experimental studies and feeding cattle involved with different research projects. Bayleigh enjoys working with cattle and those in the cattle industry. After graduation from ABAC, Bayleigh may pursue a career as a livestock extension agent or as a national beef cattle breed association representative.



Philippe Moriel obtained his B.S. in animal sciences from São Paulo State University (UNESP, Botucatu, Brazil) in 2008. In 2009, Philippe began his Master of Science program at the University of Wyoming (Laramie, WY), advised by Dr. Bret W. Hess. The focus of his research at the University of Wyoming focused on strategies to enhance the reproductive performance of beef heifers and cows. In 2010, Philippe obtained his M.S. degree in Animal and Veterinary Sciences, and immediately

moved to Gainesville, FL to begin his Ph.D. program, advised by Dr. John D. Arthington. During his doctorate program, Philippe focused on strategies to alleviate stress and enhance the pre- and post-weaning growth performance of newly received stressed beef calves, as well as the long-term impacts of metabolic imprinting and nutritional management systems, following early-weaning, on growth and reproductive performance, carcass quality and gene expression of beef calves. In April 2013, Philippe was hired as the Assistant Professor – Mountain Livestock Specialist at the North Carolina State University. Philippe will be responsible for implementing innovative applied research program on the Mountain and Upper Mountain Research stations, and for developing statewide extension program, designed to enhance livestock production in the region.

Upcoming Events

Brahman Genetics for Florida Commercial Beef Production - August 16

This informational event will be held at the Bert J. Harris Agri-Civic Center on 4509 George Blvd., in Sebring. It is hosted by the South Florida Beef Forage Program, American Brahman Breeders Association, and Florida Brahman Association.

Click [here](#) to view the brochure.

Register at <http://brahman.eventbrite.com> by August 2nd, there is no cost to attend, but registration is required.

Winter Supplementation Program - August 22

From time to time, pastures in South Florida are effected by low rainfall during winter months. It is important to budget for the costs associated with this time of year—feed, hay, stockpiled forage, etc. Before you spend the time and money to supplement your cattle, learn the nutrient requirements of your cows and bulls—Are you putting out enough? And it isn't always necessary to purchase supplement. You can manage your forages to last through the winter! This seminar is sponsored by the South Florida Beef Forage Program and will be held at the Myakka City Community Center located at 10060 Wauchula Road, Myakka City.

Click [here](#) to view the brochure and the registration form. Register by August 8th, \$5 fee.

Range Cattle REC Field Day - October 1

Save the date! The Range Cattle Research and Education Center (RCREC) Field Day will be held on Tuesday, October 1st. This event is held every 18 months allowing participants to learn about warm and cool season research being done at the RCREC - enjoy faculty presentations of their latest research, see our facilities, and visit experimental sites in the field.

The brochure for this event will be release in August with all the details and registration information.

Recent Publications

Arthington, J.D., R.F. Cooke, T.D. Maddock, D.B. Araujo, P. Moriel, N. DiLorenzo, and G.C. Lamb. 2013. Effects of vaccination on the acute-phase protein response and measures of performance in growing beef calves. *Journal of Animal Science*. 91:1831-1837.

Moriel, P. and J.D. Arthington. 2013. Effects of trace mineral-fortified, limit-fed preweaning supplements on performance of pre- and postweaned beef calves. *Journal of Animal Science*. 91:1371-1380.

Silveira, M.L., J.L. Driscoll, C.P. Silveira, D.A. Graetz, L.E. Sollenberger, and J.M.B. Vendramini. 2013. Land application of aluminum water treatment residual to bahiagrass pastures: soil and forage responses. *Agronomy Journal*. 105:796-802.

Silveira, M.L., F.M. Rouquette Jr., V.A. Haby, and G.R. Smith. 2013. Impacts of thirty-seven years of stocking on soil phosphorus distribution in bermudagrass pastures. *Agronomy Journal*. 105:922-928.

Vendramini, J.M.B., L.E. Sollenberger, A.D. Blount, A.D. Aguiar, L. Galzerano, A.L. Valente, E. Alves, and L. Custodio. 2013. Bahiagrass cultivar response to grazing frequency with limited N fertilization. *Agronomy Journal* 105:938-944

Faculty News

Dr. Maria Silveira's, *Agronomy Journal* article, "Land application of aluminum water treatment residual to bahiagrass pastures: soil and forage responses" was featured in the July 2013 issue of *CSA News*. View the abstract: <https://dl.sciencesocieties.org/publications/aj/abstracts/105/3/796>

E NEWS AVAILABLE

Help us protect the environment and reduce expenses by receiving this and other publications from us by e-mail. Give us a call (863-735-1314) or click the link below to let us know you would like to receive electronic mailings.

**Subscribe to E News
via ona@ifas.ufl.edu**

ABOUT THIS NEWSLETTER

This newsletter is a publication of the UF/IFAS Range Cattle Research and Education Center (RCREC) located in South Central Florida in the heart of Florida's cattle country. Our goal is to keep you up to date on RCREC happenings, publications, research, faculty & student news, upcoming events and bring you beneficial information you can use in your beef cattle or forage operation.

CONTACT INFORMATION

UF/IFAS Range Cattle Research and Education Center
3401 Experiment Station, Ona, FL 33865
Phone: 863-735-1314
Fax: 863-735-1930
E-Mail: ona@ifas.ufl.edu
Website: <http://rcrec-ona.ifas.ufl.edu>
Newsletter Contact: Andrea Dunlap

