

What's new in peppertree and climbing fern control?


Stephen F. Enloe
Professor and
Extension Specialist

UF IFAS UNIVERSITY OF FLORIDA CENTER FOR AQUATIC AND INVASIVE PLANTS



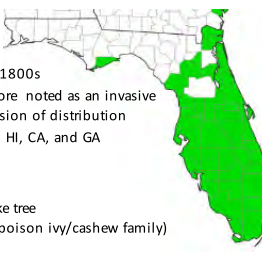
Managing invasive plants
IS EASY.
IT'S LIKE RIDING A BIKE.
EXCEPT THE BIKE IS ON FIRE.
YOU'RE ON FIRE.
EVERYTHING IS ON FIRE.

THIS IS FINE.

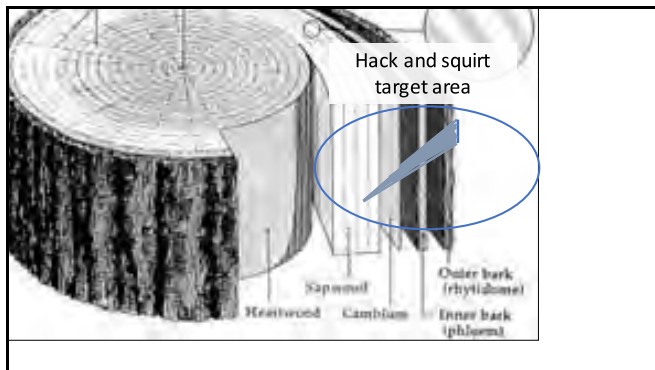


Brazilian Peppertree

- Introduced early 1800s
- Long lag time before noted as an invasive
- Northward expansion of distribution
- Also found in TX, HI, CA, and GA
- Dioecious
- Woody shrub-like tree
- Anacardiaceae (poison ivy/cashew family)



UF IFAS UNIVERSITY OF FLORIDA CENTER FOR AQUATIC AND INVASIVE PLANTS

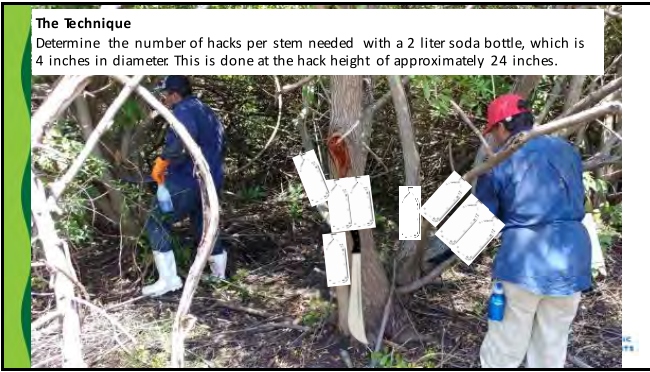


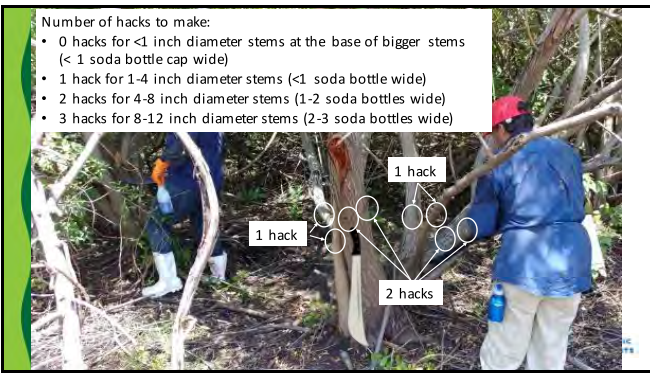


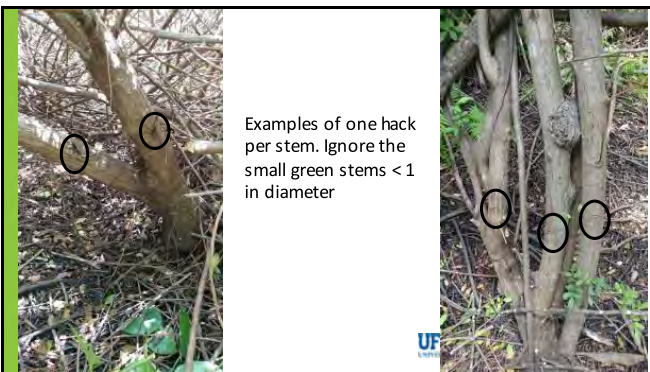
The Herbicide

- Method 240SL
 - Aminocyclopyrachlor
 - 2 POUNDS ACID EQUIVALENT PER GALLON
- Generally nonselective broadleaf herbicide
- This is a very powerful herbicide
 - "More like imazapyr than triclopyr" in terms of soil residual activity and broad-spectrum efficacy
 - Mode of action is the same as 2,4-D, dicamba, and triclopyr
- 50% v/v for hack and squirt is the starting point

UF IFAS UNIVERSITY OF FLORIDA CENTER FOR AQUATIC AND INVASIVE PLANTS





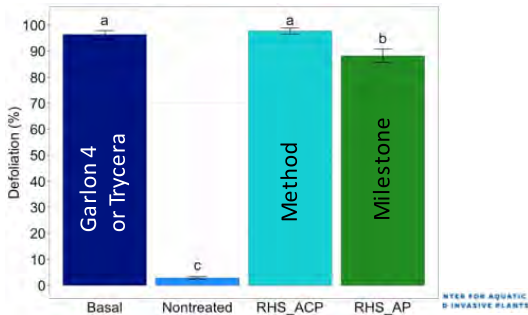


- Get 1 ml of the herbicide solution into the hack
- Avoid runoff out of the hack
- Use a squirt bottle that delivers 1 ml/stroke
- Add a blue spray indicator for clarity

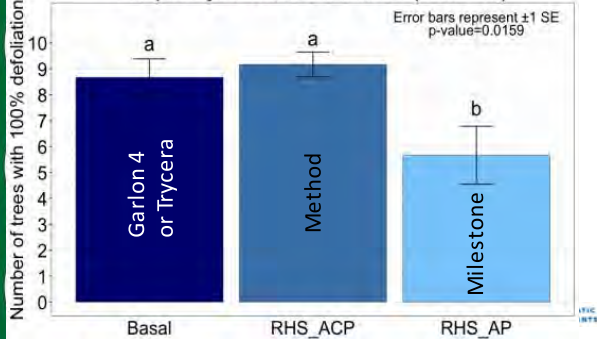


UF IFAS UNIVERSITY OF FLORIDA CENTER FOR AQUATIC AND INVASIVE PLANTS

% Defoliation 540 DAT



Frequency of 100% Defoliation (out of 10) 540 DAT



What this means for you

- Reduced hack and squirt treatments of Method (50% v/v) are extremely effective on BP and many woody invasives
 - It uses ~95% less herbicide
 - It is similar in application time to basal bark application
 - It eliminates the need to carry a 4-gallon backpack sprayer
- This is a non-crop/natural area treatment



UF IFAS UNIVERSITY OF FLORIDA CENTER FOR AQUATIC AND INVASIVE PLANTS

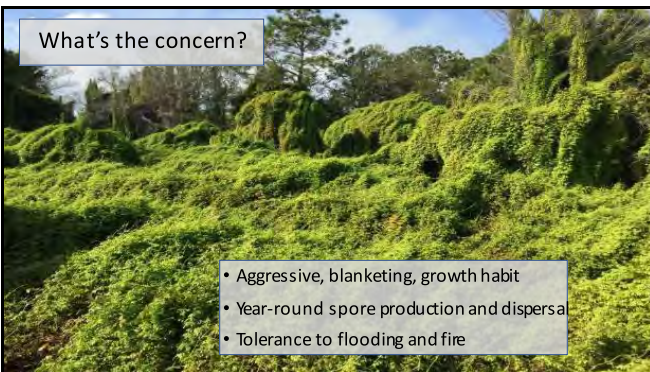
Old World Climbing Fern (*Lygodium microphyllum*)



Tony Perlas, USDI NPS, Bugwood.org

UGA5276001

What's the concern?



- Aggressive, blanketing, growth habit
- Year-round spore production and dispersal
- Tolerance to flooding and fire





Glyphosate (3% v/v) + Poodle cutting

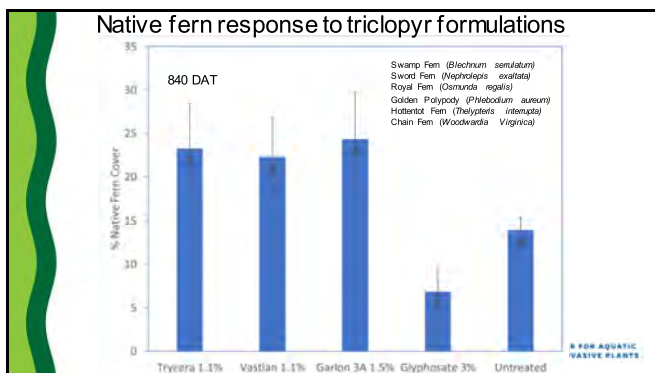
Glyphosate (3% v/v), NO Poodle cutting

March 20, 2015

STOP WHO/IARC has never classified glyphosate as a carcinogen

The IARC reclassified glyphosate from "Possibly Carcinogenic" to "Probably Carcinogenic" (IARC Category 2b to 2a)

MONSANTO ROUNDUP LEGAL HELPLINE
WEITZ & LUSKINBERG 1-800-926-7145



What this means for you

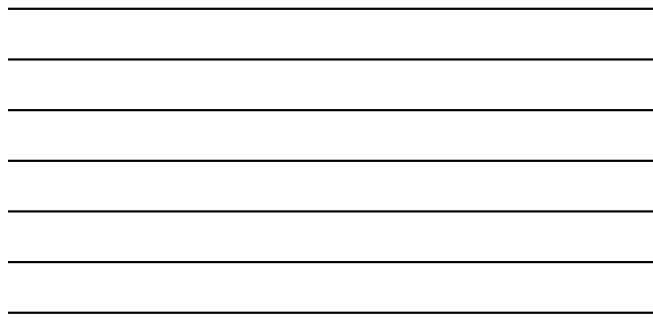
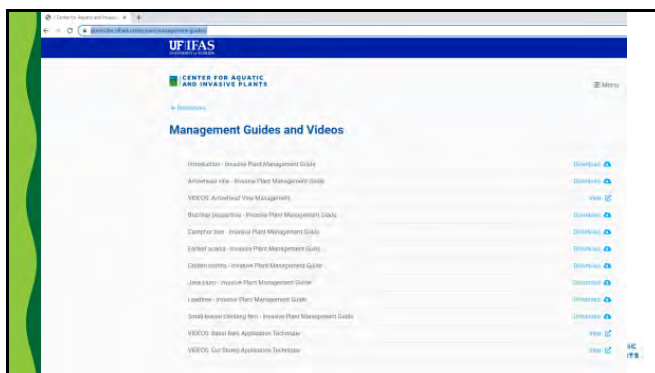
- Triclopyr is an effective alternative to glyphosate for OWCF control
 - You can reduce herbicide use by >50%
 - Four different formulations (3 labeled for use in aquatics)
 - Generally better native fern tolerance than glyphosate
 - Be careful for triclopyr overapplication around the base of trees

UF IFAS UNIVERSITY OF FLORIDA CENTER FOR AQUATIC AND INVASIVE PLANTS

Extension in the Pipeline

- Individual Plant Treatment Technique Training
 - Basal Bark
 - Cut stump
 - Hack and squirt
 - Foliar

UF IFAS UNIVERSITY OF FLORIDA CENTER FOR AQUATIC AND INVASIVE PLANTS



ANACARDIACEAE FAMILY

Characteristics

Shrub or tree up to 10 m tall with a spreading canopy. Bark is smooth, with a light brown color. Leaves are alternate, ovate to elliptic, with a serrated margin. Flowers are small and white. Fruits are large and fleshy, with a hard shell. The tree is native to the southeastern United States and is widely distributed in Florida.

DISTRIBUTION IN FLORIDA

Found throughout the peninsula but mostly also found in the western panhandle.

Table 1. Herbicide control for ANACARDIACEAE

HERBICIDE	ACTIVE INGREDIENTS	PRODUCTS BY MANUFACTURER	FORMULA	RATE	APPLY	REMARKS
TRIFLURALIN	TRIFLURALIN	TRIFLURALIN	30% SL	1.0-1.5	Pre-emergent	Apply to soil before weed emergence.
TRIFLURALIN	TRIFLURALIN	TRIFLURALIN	30% SL	1.0-1.5	Pre-emergent	Apply to soil before weed emergence.
TRIFLURALIN	TRIFLURALIN	TRIFLURALIN	30% SL	1.0-1.5	Pre-emergent	Apply to soil before weed emergence.
TRIFLURALIN	TRIFLURALIN	TRIFLURALIN	30% SL	1.0-1.5	Pre-emergent	Apply to soil before weed emergence.
TRIFLURALIN	TRIFLURALIN	TRIFLURALIN	30% SL	1.0-1.5	Pre-emergent	Apply to soil before weed emergence.
TRIFLURALIN	TRIFLURALIN	TRIFLURALIN	30% SL	1.0-1.5	Pre-emergent	Apply to soil before weed emergence.
TRIFLURALIN	TRIFLURALIN	TRIFLURALIN	30% SL	1.0-1.5	Pre-emergent	Apply to soil before weed emergence.
TRIFLURALIN	TRIFLURALIN	TRIFLURALIN	30% SL	1.0-1.5	Pre-emergent	Apply to soil before weed emergence.
TRIFLURALIN	TRIFLURALIN	TRIFLURALIN	30% SL	1.0-1.5	Pre-emergent	Apply to soil before weed emergence.
TRIFLURALIN	TRIFLURALIN	TRIFLURALIN	30% SL	1.0-1.5	Pre-emergent	Apply to soil before weed emergence.



https://plants.ifas.ufl.edu/resources/management-guides/

CAIP Basal Bark Application Introduction

UF/IFAS Center for Aquatic and Invasive Plants • 12 views • 1 month ago

CAIP Instructional - 1 Targets

UF/IFAS Center for Aquatic and Invasive Plants • 5 views • 1 month ago

CAIP Instructional - 2 Treatments Part 1

UF/IFAS Center for Aquatic and Invasive Plants • 3 views • 1 month ago

CAIP Instructional - 2 Treatments Part 2

UF/IFAS Center for Aquatic and Invasive Plants • 4 views • 1 month ago

CAIP Instructional - 3 Tools

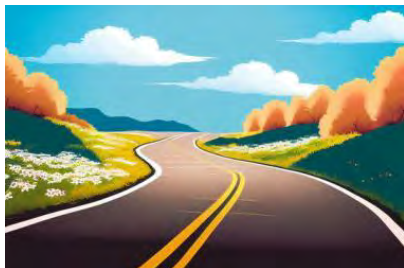
UF/IFAS Center for Aquatic and Invasive Plants • 1 view • 1 month ago

CAIP Instructional - 4 Techniques

UF/IFAS Center for Aquatic and Invasive Plants • 4 views • 1 month ago



Where is my research and extension program headed?



UF IFAS UNIVERSITY OF FLORIDA CENTER FOR AQUATIC AND INVASIVE PLANTS

Cuban bulrush (*Cyperus blepharoleptos*) Management



It's time to revisit cogongrass



Glyphosate (Roundup Custom 1.5% v/v) 14 DAT

UF IFAS UNIVERSITY OF FLORIDA CENTER FOR AQUATIC AND INVASIVE PLANTS
Glufosinate (Interline 1.5% v/v) 14 DAT

Ongoing projects

- OWCF gametophyte ecology and management
- Wetland nightshade
- Java plum
- Earleaf acacia
- Leadtree



Questions?

- sfenloe@ufl.edu



1:54 / 11:03