

**Collaboration, Communication, and Education: Enhancing Florida's Livestock Industry through the SFBFP**

**Sheri Trent**  
 UF/IFAS Extension 4-H Youth Development/Agriculture  
 Seminole Tribe

**Allie Williams**  
 UF/IFAS Extension Small Farms & Alternative Enterprises  
 Hillsborough County



1

---

---

---

---

---


---

---

---

**South Florida Beef Forage Program**

- Established in 1981
- Consists of UF IFAS Extension Agents from South Florida
- 18 counties + UF Range Cattle REC
- Develop educational programs for livestock producers



2

---

---

---

---

---



---

---

---

**Who are we?**

- South/Central Florida Agents
  - Livestock
  - Ag & Natural Resources
  - Small Farms

3

---

---

---

---

---

---

---

---



4

---

---

---

---

---

---

---

---



5

---

---

---

---

---

---

---

---



6

---

---

---

---

---

---

---

---

### The SFBFP designs and implements programs to assist and educate producers

- These programs differ in presentation, location, topics, dates and duration
- We evaluate programs annually to adapt and accommodate by incorporating participant and advisory committee feedback



7

---

---

---

---

---

---

---

---

### Forage Management Tour and Workshop

- One day program in March in Labelle, FL
- Purpose: Gain practical knowledge about improved forages and pasture management
- Topics: Soil sampling demonstration, weed prevention through ground cover selection, herbicide and biocontrol, healthy soil practices
- Maximum potential for your forage



8

---

---

---

---

---

---

---

---

### Environmental Lands Management

- One day program: March 31 at Ona
- Purpose: Increase knowledge of the ecosystem and services provided by grazing cattle and increase productivity and forage management
- Topics: Ecosystem services, soil health, stocking rates, forage management, body condition scoring, tour of the facility with demonstrations



9

---

---

---

---

---

---

---

---

### Herd Health Seminar

- One day program: April 21st in Polk County
- Purpose: Improve overall health of herd, increase weight gain in weaned calves
- Topics: Calf management practices, calf management economics, value added programs (panel)

10

---

---

---

---

---

---

---

---

### Ranching Foundation Program

- 3 evening opportunities: May 12: Okeechobee
  - May 16: Sarasota
  - May 19: Pasco
- Purpose: Designed for beginning or small ranches, provide education regarding raising cattle with good stewardship practices, pasture management and utilizing land to its potential.
- Topics: Site assessment and resources, best management practices, pasture establishment and management, pasture weeds

11

---

---

---

---

---

---

---

---

### Nutrition for Beef Females

- Two opportunities for this one day program:
  - May 25 in Okeechobee
  - May 26 in Desoto
- Purpose: improve production in cattle nutrition, body condition and overall weight gain of cattle
- Topics: body condition scoring and nutritional practices

12

---

---

---

---

---

---

---

---

### Cattle Management for Women

One day program for women: October 20th in Ona

- Different aspects of cattle and range management for today's cattle operations
- Pen design, forage and grazing management, proper soil, tissue, hay and water sampling, Alternative enterprises for ranchers
- Panel discussion on Electronic Identification and record keeping
- To foster an intimate and interactive educational experience, this program is limited to the first 50 paid participants.



13

---

---

---

---

---

---

---

---

### Reproductive Management School

- 3 day program on a beef ranch in Hendry County
- Purpose: Increase profitability, knowledge and experience concerning viability of reproductive systems of cattle
- Topics: Nutrition, pasture management, bull health, breeding season lengths, artificial insemination practices, BQA practices, genetic selection, palpation
- Hands on labs, chute side demonstrations, classroom presentations, seminars



14

---

---

---

---

---

---

---

---

### Winter Supplementation Seminar

- One day program on September 22 in Desoto County
- Purpose: Address nutritional needs of the cow herd, maintain body condition and improve productivity
- Topics: Nutritional requirements for cattle, body condition maintenance, trace minerals, molasses composition



15

---

---

---

---

---

---

---

---



16

---

---

---

---

---

---

---

---



17

---

---

---

---

---

---

---

---



18

---

---

---

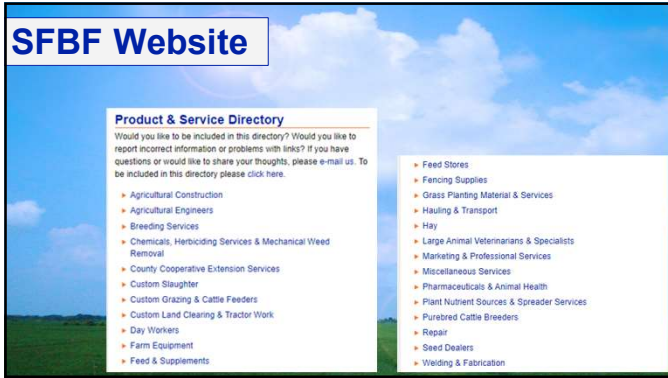
---

---

---

---

---



19

---

---

---

---

---

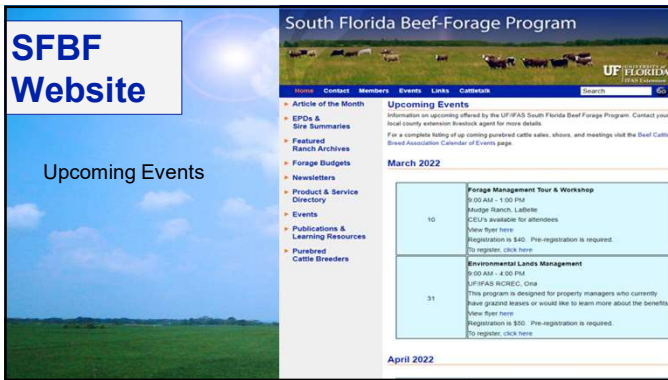
---

---

---

---

---



20

---

---

---

---

---

---

---

---

---

---



21

---

---

---

---

---

---

---

---

---

---



22

---

---

---

---

---

---

---

---



23

---

---

---

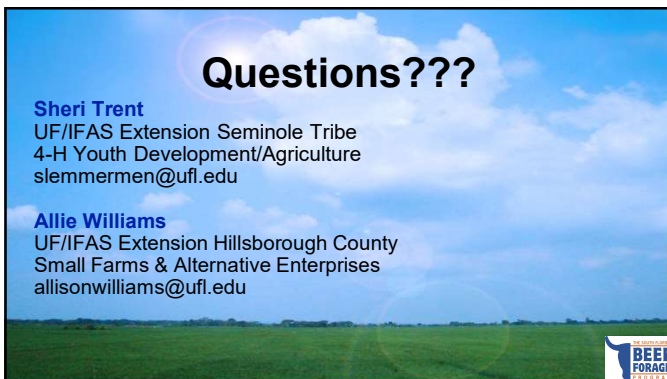
---

---

---

---

---



24

---

---

---

---

---

---

---

---